

Saline Health System 2024

Community Health Needs Assessment

-Saline County, Arkansas-



Adopted by the JV Board on 11.12.24
Adopted by the Advisory Board on 12.03.24



Table of Contents

Letter to the Community.....	3
Community Health Needs Assessment Overview.....	4
Process and Methods.....	6
About Saline Memorial Hospital.....	7
Community Served.....	8
Saline County Community Health Characteristics.....	10
Impact Since Last CHNA.....	12
Methods of Identifying Health Needs.....	16
Community Survey Data.....	17
Community Summit.....	21
Evaluation and Selection Process.....	22
Overview of Priorities.....	23
Implementation Plan Framework.....	25
Implementation Plan Strategy.....	26
Appendix: Survey Results.....	32

Letter to the Community

Dear Community,

The mission of Saline Memorial Hospital is making communities healthier. Our patients can expect quality healthcare with a personal touch, and we continually work to expand services to better meet the needs of patients and local residents.

Every three years, we conduct a Community Health Needs Assessment to gain insight and feedback on the community we serve. This allows us to understand how our efforts have affected local residents and what shifts need to take place to continue progression for a healthier community.

The 2024 Community Health Needs Assessment not only highlights the local health needs but provides an action plan detailing how Saline Memorial Hospital will respond to those health needs. We believe it is of utmost importance that our friends, family and neighbors receive high-quality, compassionate care right here, close to home. Through expanded service offerings and partnerships with other organizations, we strive to be your hub for healthcare in Saline County. Our implementation strategy outlines the prioritized community health needs, including actions we will take to address the need and the anticipated impact.

At Saline Memorial Hospital, we believe that making communities healthier isn't limited to treating patients here on our campus. That's why we are committed to partnering with local government and nonprofit leaders to address societal issues that may adversely affect the community's health and wellbeing.

Saline Memorial Hospital is a diverse facility that strives to create places where people choose to come for healthcare, physicians and providers want to practice, and employees want to work. It's important to us because our culture is built around the idea that we are friends and family taking care of friends and family.

Sincerely,



Jeff Bourgeois

CEO – Saline Memorial Hospital

Community Health Needs Assessment (CHNA) Overview

In 2024, Saline Memorial Hospital (“SMH”) performed a Community Health Needs Assessment (CHNA) in partnership with Strata Decision Technology (“Strata”) to determine the health needs of the local community and develop an accompanying implementation plan to address the identified health needs of the community.

CHNA Purpose

A CHNA is part of the required hospital documentation of “Community Benefit” under the Affordable Care Act for 501(c)(3) hospitals. It uses systematic, comprehensive data collection and analysis to provide information about the community including health status, needs, and disparities. The CHNA also offers a targeted action plan to address areas of need and allows the hospital to truly understand the health needs of the community it serves.

CHNA Facility Benefits



- Identify health disparities and social determinants to inform future initiatives, programs, and outreach strategies
- Identify gaps in healthcare
- Develop an understanding of perceptions and ideas among community members
- Form collaborations with community organizations to address local health needs

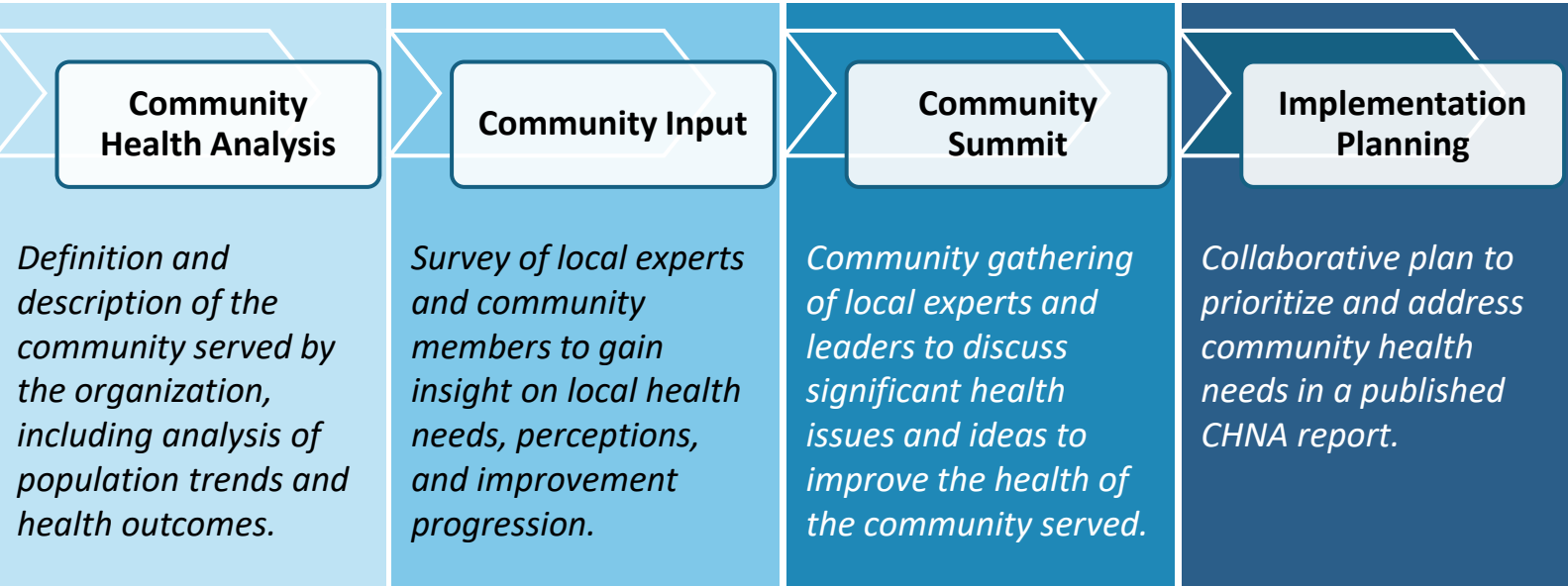
The core elements of a CHNA include:

- a definition and description of the community served
- a description of the process and methods used to conduct the CHNA
- a description of how the hospital facility solicited and took into account input received from community members
- a description of the identified significant health needs of the community, including selection process and criteria
- a description of resources available to address the significant health needs
- an evaluation of the impact of any actions that were taken to address the significant health needs identified in the immediately preceding CHNA

Community Health Needs Assessment (CHNA) Overview

The CHNA Process

The process to conduct the CHNA included the following:



Saline Memorial Hospital’s health priorities identified through the 2024 process are:

- 1 Mental Health
- 2 Women’s Health
- 3 Heart Disease

This report was approved by the JV Board on 11.12.24 and the Advisory Board on 12.03.24.

Process and Methods used to Conduct the Assessment

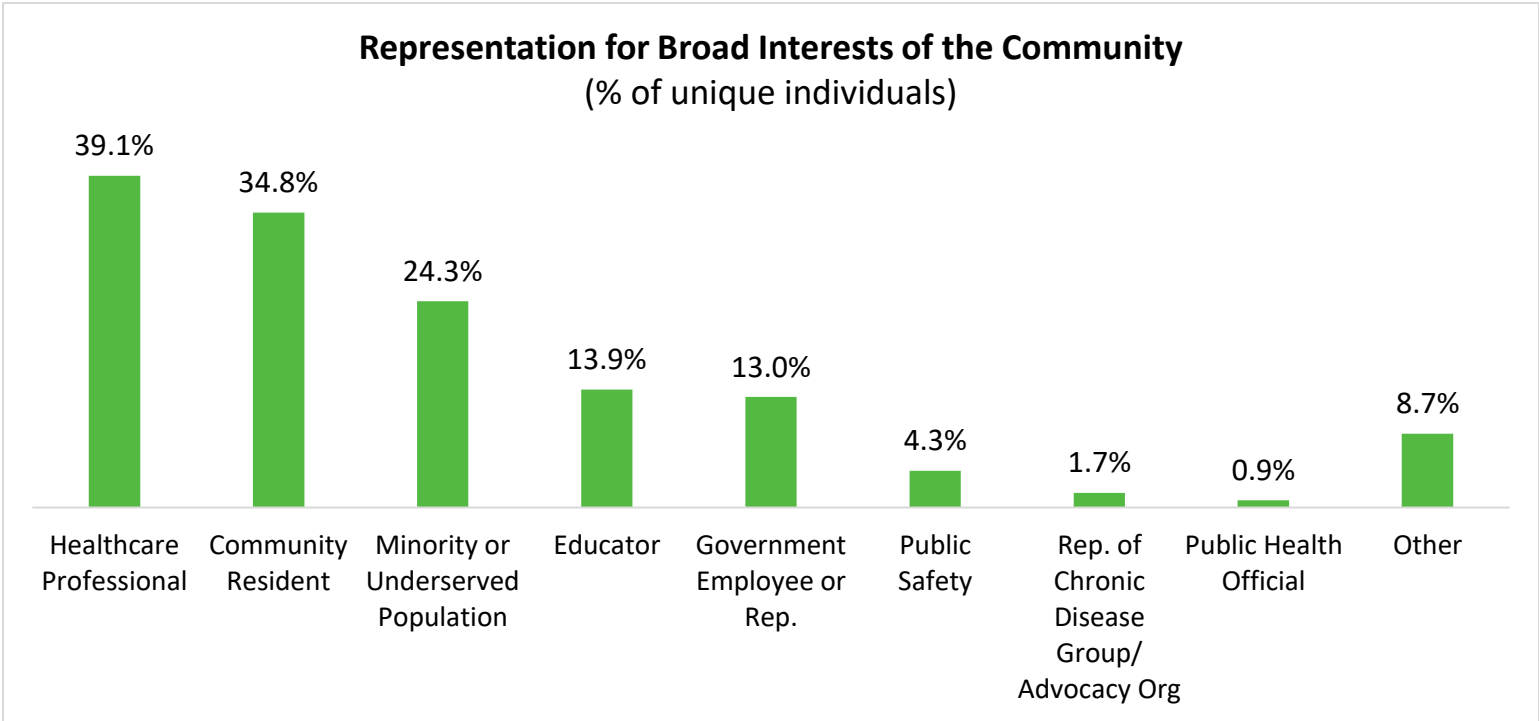
To assess the health needs of the community, a comprehensive approach was utilized. This included collecting community health data via secondary sources and a survey of community members to assess healthcare needs. A community summit was then held to review these inputs with community stakeholders to prioritize the health needs of the community and create action plans.

Community Health Data Collection and Analysis

Saline Memorial Hospital relied on secondary source data to define and assess the community. This data was sourced at the county level from available public sources, including www.countyhealthrankings.org and ESRI.

A community survey was deployed by Saline Memorial Hospital to gain input on local health needs, including those of priority populations such as the medically underserved, low-income, and minority populations. The survey received feedback from 86 community members. The survey was open from September 23, 2024 to October 18, 2024 and distributed digitally. The Community Summit was held on October 24, 2024 and had 29 participants.

Survey respondents and summit participants represented the stakeholder groups below:



About Saline Memorial Hospital

As one of the fastest-growing counties in Arkansas, Saline County has seen an increase in young families moving to the community, and Saline Memorial Hospital (SMH) has grown during the past 69 years to meet the demand for quality, convenient healthcare. More than 180 active and consulting physicians work by the side of trained health professionals to provide highly skilled, compassionate care.

At Saline Memorial Hospital, patients can expect quality healthcare with a personal touch. As a 177-bed, community hospital and one of the largest employers in Saline County, Saline Memorial continually works to expand services to better meet the needs of patients and local residents.

The main hospital campus encompasses approximately 400,000 square feet of Inpatient and Outpatient treatment areas. Services range from inpatient rehabilitation services, behavioral health, cardiology, orthopedics, wound care, weight loss surgery and programs, sleep medicine, women’s health, pediatrics, emergency services, diagnostic imaging, therapy services, withdrawal management and more.

Mission

Making communities healthier®

Vision

We want to create places where people choose to come for healthcare, physicians and providers want to practice, and employees want to work.

Values



**Champion
Patient Care**



**Do the
Right Thing**



**Embrace
Individuality**



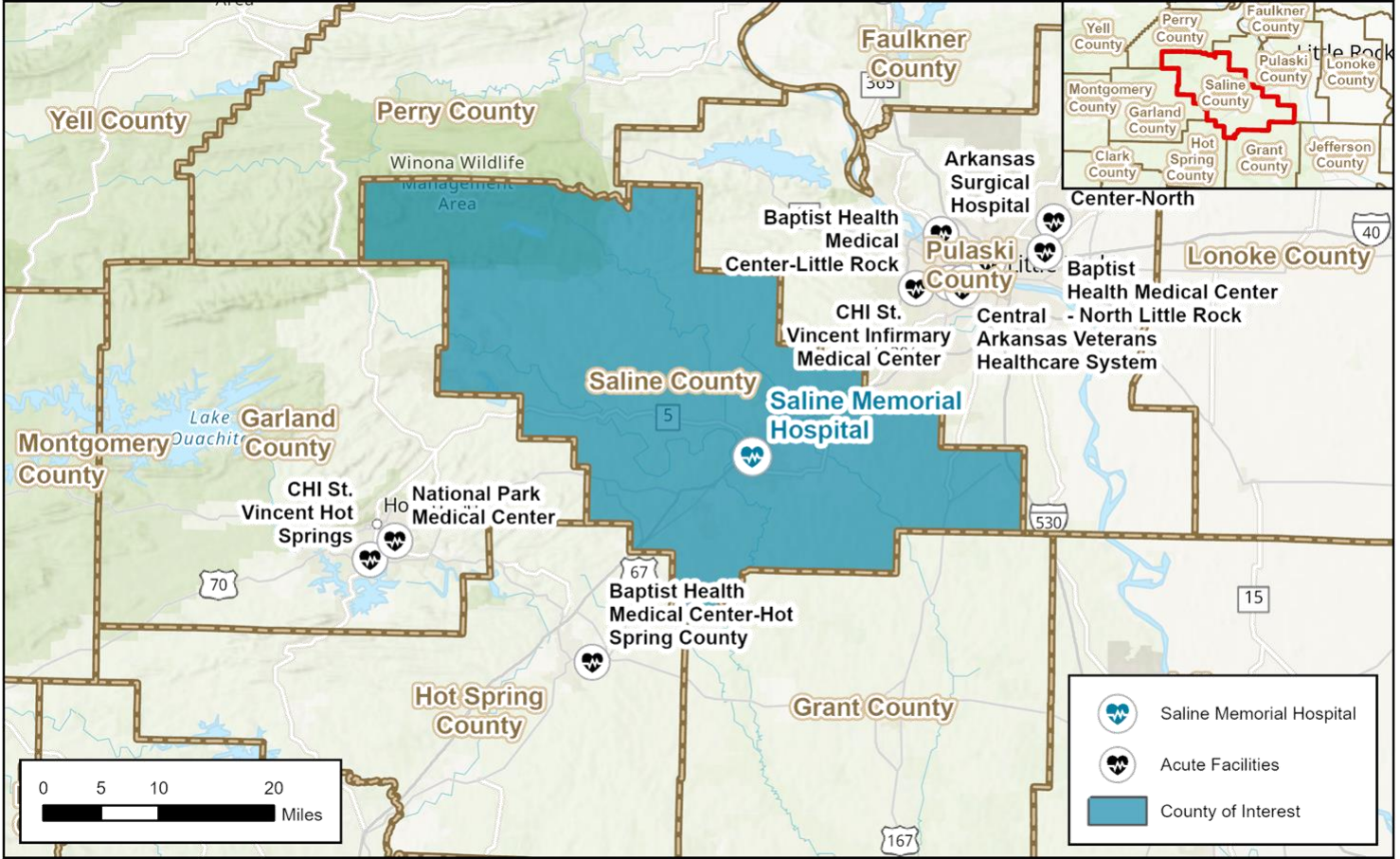
**Act with
Kindness**



**Make a
Difference
Together**

Community Served

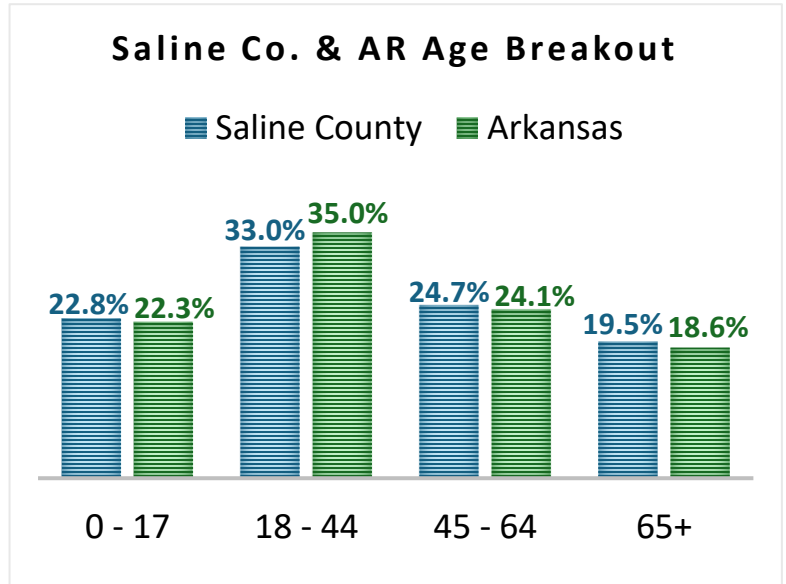
For the purpose of this study, Saline Memorial Hospital defines its service area as Saline County, Arkansas.



2024 Total Saline County Population: 129,944
2029 Projected Total Saline County Population: 135,554

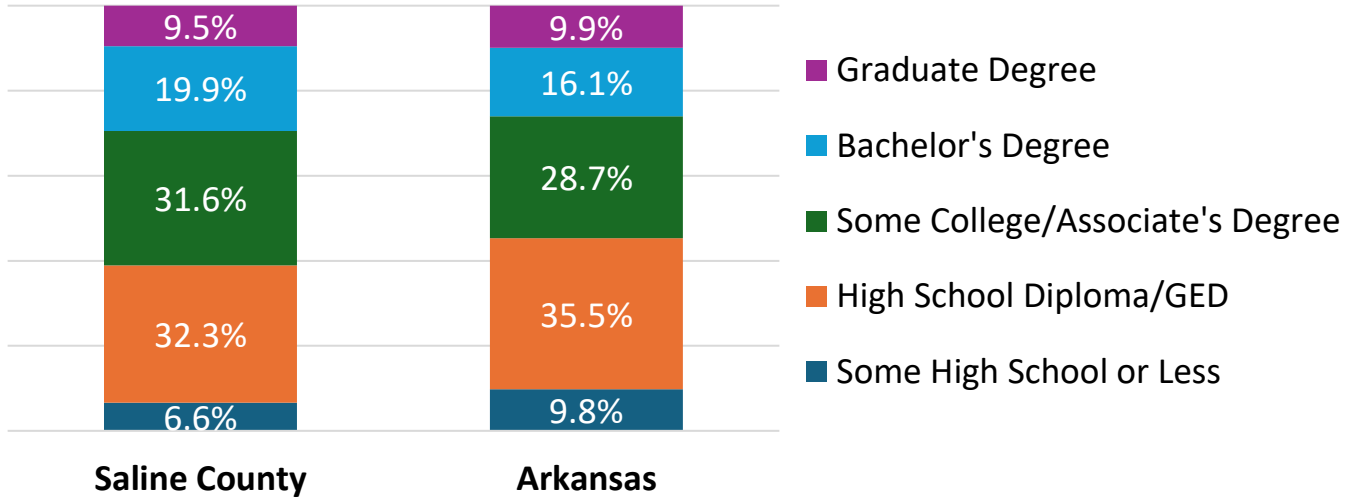
0.9% growth per year

Race & Ethnicity		
	Saline Co.	Arkansas
White	77.7%	69.2%
Black	9.8%	15.0%
American Indian	0.7%	0.9%
Asian/Pacific Islander	1.3%	2.4%
Other Race	3.8%	4.9%
Two or More Races	6.7%	7.5%
Hispanic Origin	7.4%	9.3%

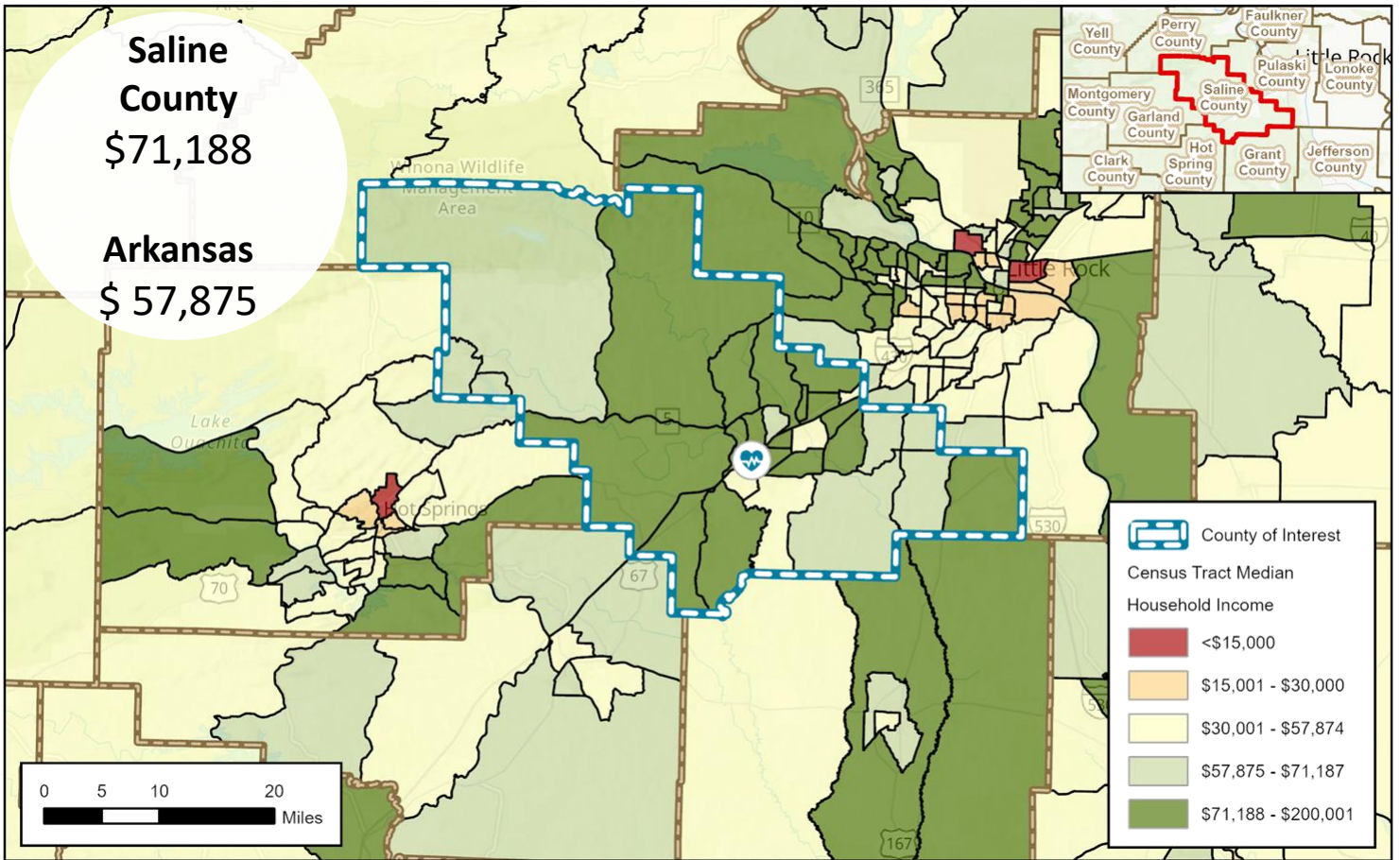


Community Served

Saline County & Arkansas Education Breakout



2024 Median Household Income {by Census Tract}



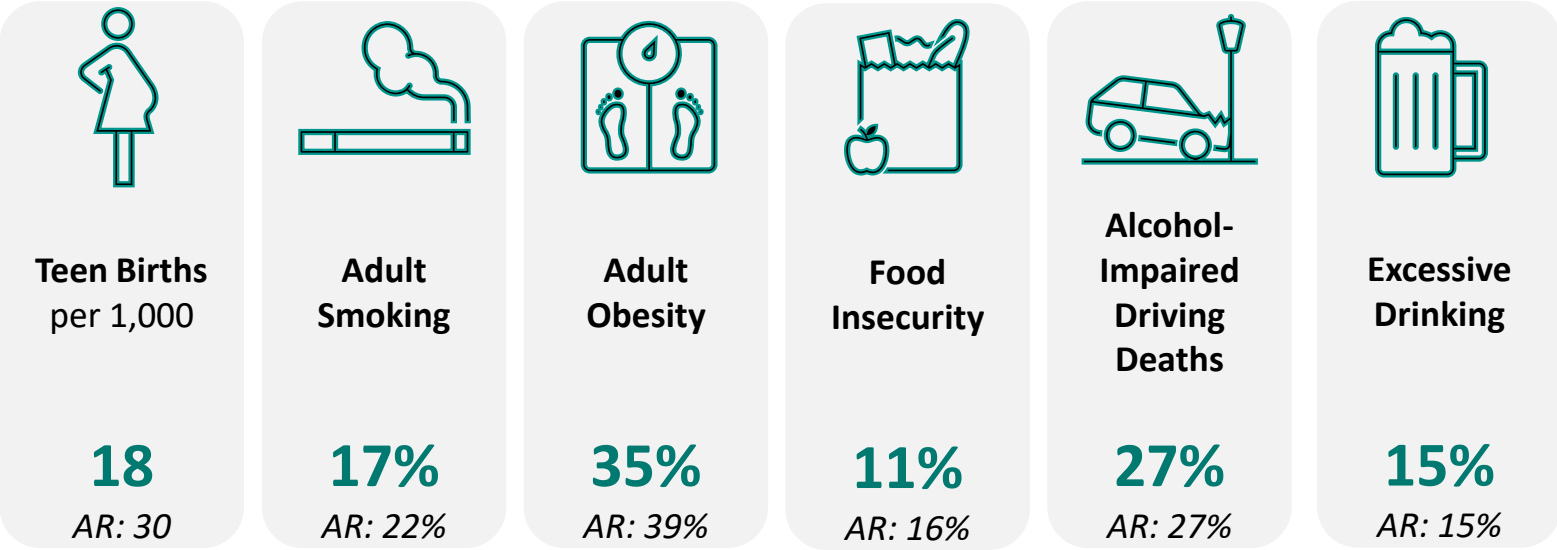
Census Tract: small, relatively permanent statistical subdivisions of a county uniquely numbered; average about 4,000 inhabitants

Saline County Community Health Characteristics

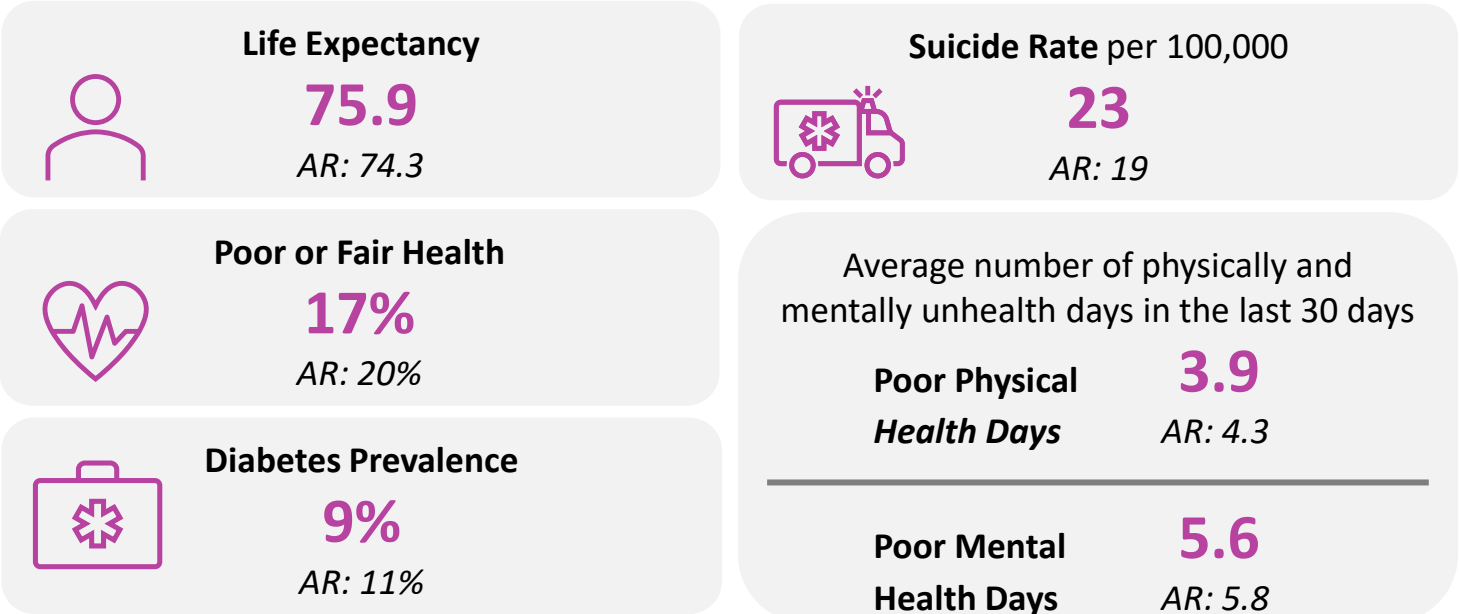
The data below provides an overview of Saline County’s community health including health behaviors, quality of life, socioeconomic factors, access to health and physical environment. For detailed descriptions and dates for each measure, please visit <https://www.countyhealthrankings.org/app/arkansas/2024/overview>. Each indicator impacts the health of the entire community.

Health Status Indicators

Health Behaviors

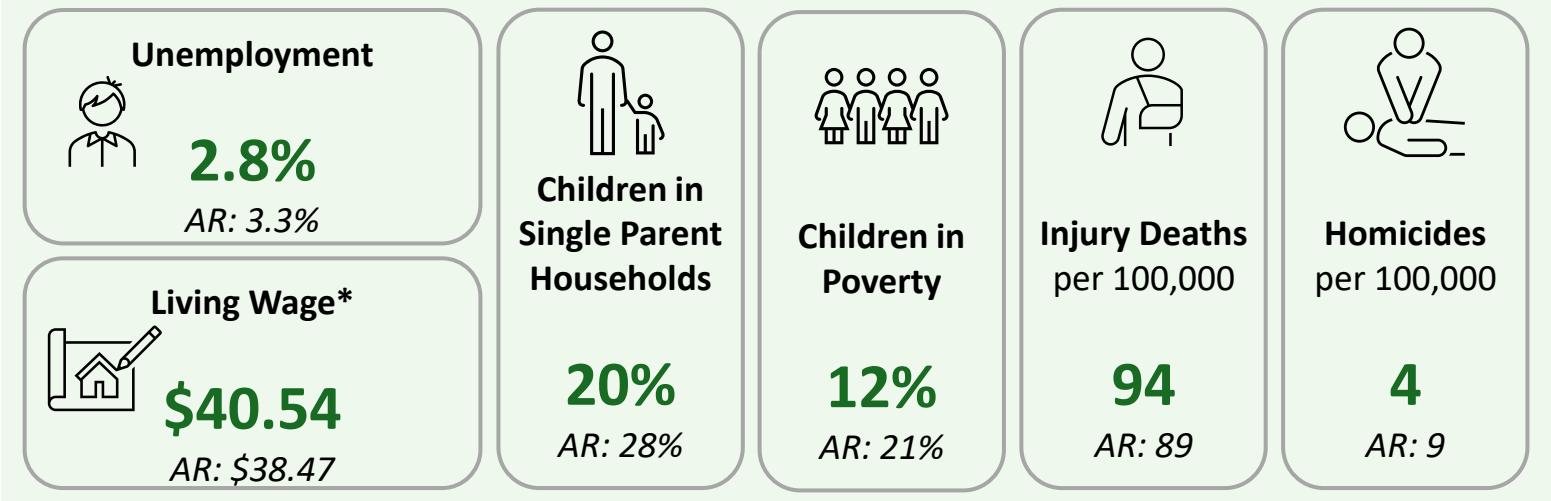


Quality of Life

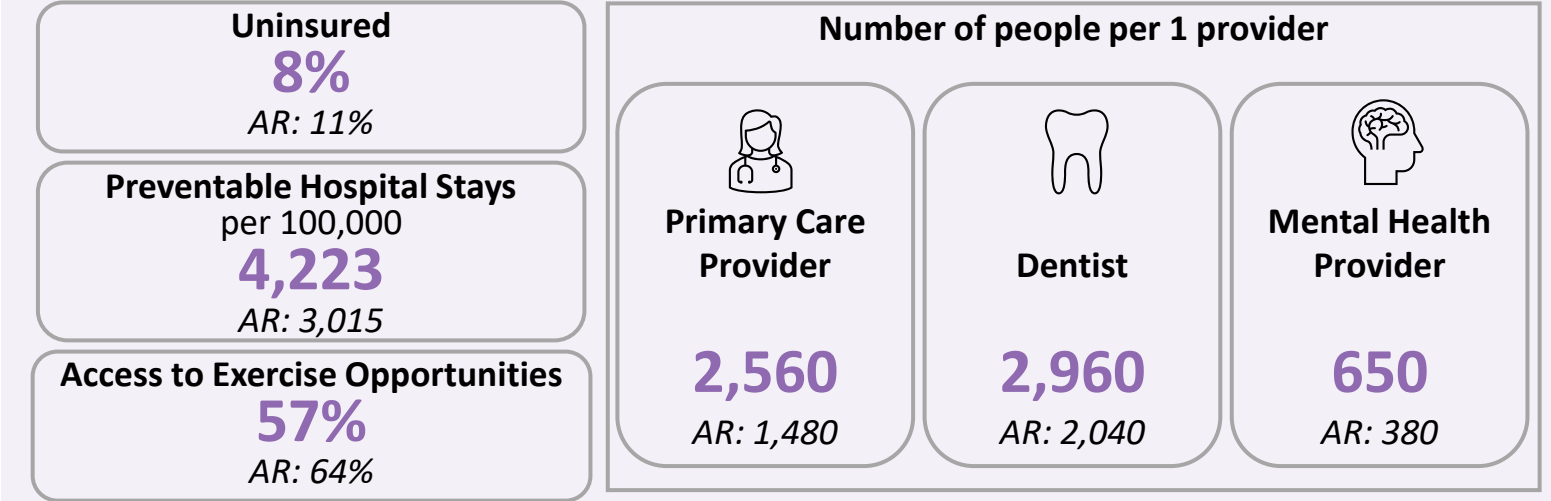


Saline County Community Health Characteristics

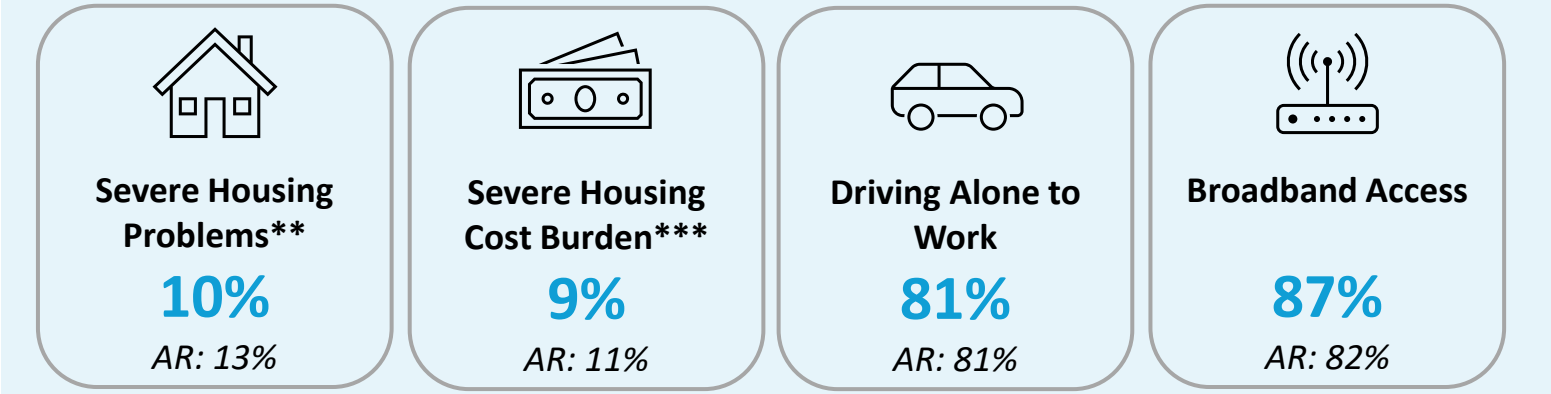
Socioeconomic Factors



Access to Health



Physical Environment



*The hourly wage needed to cover basic household expenses plus all relevant taxes for a household of one adult and two children.
 **% of households with at least 1/4 of problems: overcrowding, high housing costs, lack of kitchen facilities, or lack of plumbing facilities
 ***% of households that spend 50% or more of their household income on housing

Impact Since Last CHNA

The IRS requires there to be an evaluation of the impact of any actions that were taken to address the significant health needs identified in the immediately preceding CHNA. The health priorities identified in the 2021 CHNA are listed below.

-  Substance Use Disorder
-  Mental Health
-  Obesity – Healthy Weight
-  Chronic Diseases
-  Health Literacy

Written comments and insights were gained from community members through the Saline Memorial Hospital Community Survey regarding the 2021 identified health priorities and implementation plan. Details of the comments and actions Saline Memorial Hospital has taken to address the identified health priorities can be found on the next three pages.

Impact Since Last CHNA

Substance Use Disorder

1. We provide free NARCAN kits and help patients who come to the ED with concerns related to drug and alcohol abuse connect with peer recovery specialists
2. We partnered with Evergreen to offer an inpatient withdrawal management program and to provide resources for continued treatment after discharge.

Themes from Community Survey Comments (29 responses)*:

- NARCAN kit availability/training (13)
- Beat Goes On 5k (7)
- Detox unit (2)
- Recovery specialist (2)
- StepOne service (2)

Mental Health

1. We brought together local healthcare providers and care facilities for a mental health symposium.
2. We work to bring awareness for resources and tools that are available for suicide prevention through community outreach, social media engagement and events, like the luminary lighting ceremony.

Themes from Community Survey Comments (20 responses):

- Luminary Ceremony (3)
- Mental Health Symposium (3)
- Support groups/workshops (3)
- Increased awareness (3)
- Go to those needing mental health (2)
- Wellness Wednesdays for staff (1)

Impact Since Last CHNA

Obesity – Healthy Weight

1. We offer a free weight loss support group meeting every month at the hospital that is open to community members.
2. We host events, the like the Fit & Fabulous Fashion Show, and do outreach at community events, like the health fair at the Ralph Bunche Community Center and the Go Red for Women luncheon, to share information about healthy living, weight loss and healthy BMI ranges.

Themes from Community Survey Comments (25 responses):

- Support groups/weight loss programs (7)
- Vitality Program (5)
 - Was useful, but has been cancelled
 - Current program is slow to start and not well advertised
- Saline’s weight loss center (3)

Chronic Diseases

1. We host the Bosom Buddies Bash event for the community every year to draw attention to breast cancer awareness and the need for early detection.
2. For the past four years, we have partnered with the American Heart Association for the Go Red for Women luncheon to encourage women to take charge of their cardiovascular health, including high blood pressure, heart disease and stroke.

Themes from Community Survey Comments (15 responses):

- Health fair (3)
- Community education (4)
 - Stroke program is always at Benton’s Third Thursdays giving out information.
 - The hospital and specialty clinics work hard in the community to offer guidance and resources to patients and family members.

Impact Since Last CHNA

Health Literacy

1. We do community outreach to share healthcare information at events like Third Thursday, Amplify and business expos.

Themes from Community Survey Comments (10 responses):

- Free physicals (2)
- Health fair (2)
- Hispanic community education/support (2)
 - More education and bilingual materials needed
 - Need onsite bilingual speakers; 1-800# is not personal- need human approach
- Increased educational support (1)

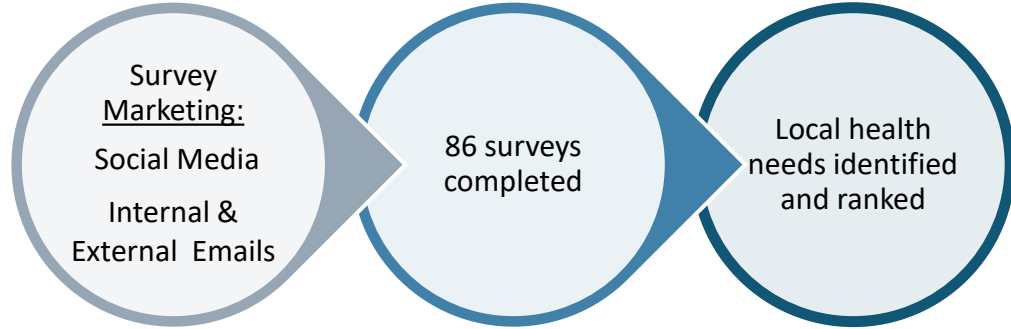
Methods of Identifying Health Needs

Analysis of existing data

Utilization of secondary data sources to gain analytical insights of the community

Data source: County Health Rankings

Collection of new data



Evaluate indicators and responses on below criteria

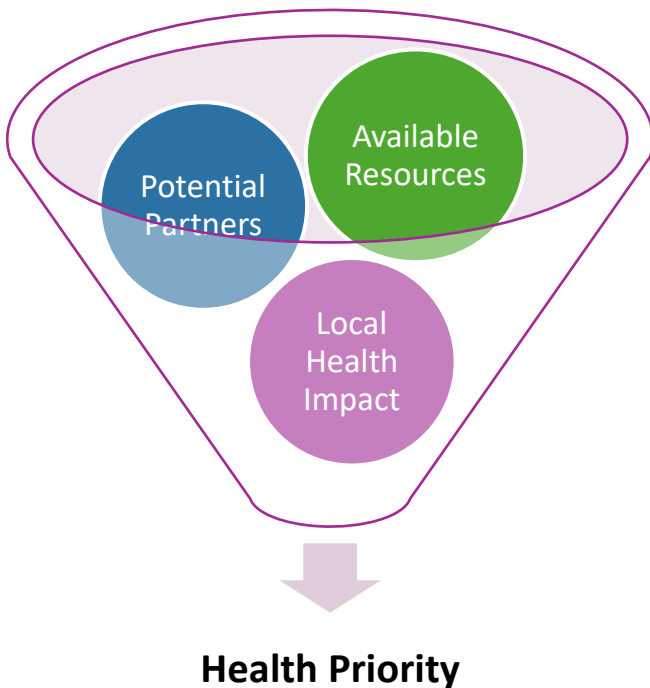
Severity or urgency of health need

Feasibility and effectiveness

Impact on health disparities

Importance identified by community

Select priority health needs for implementation plan



Saline Memorial Hospital's Health Priorities

Mental Health

Women's Health

Heart Disease

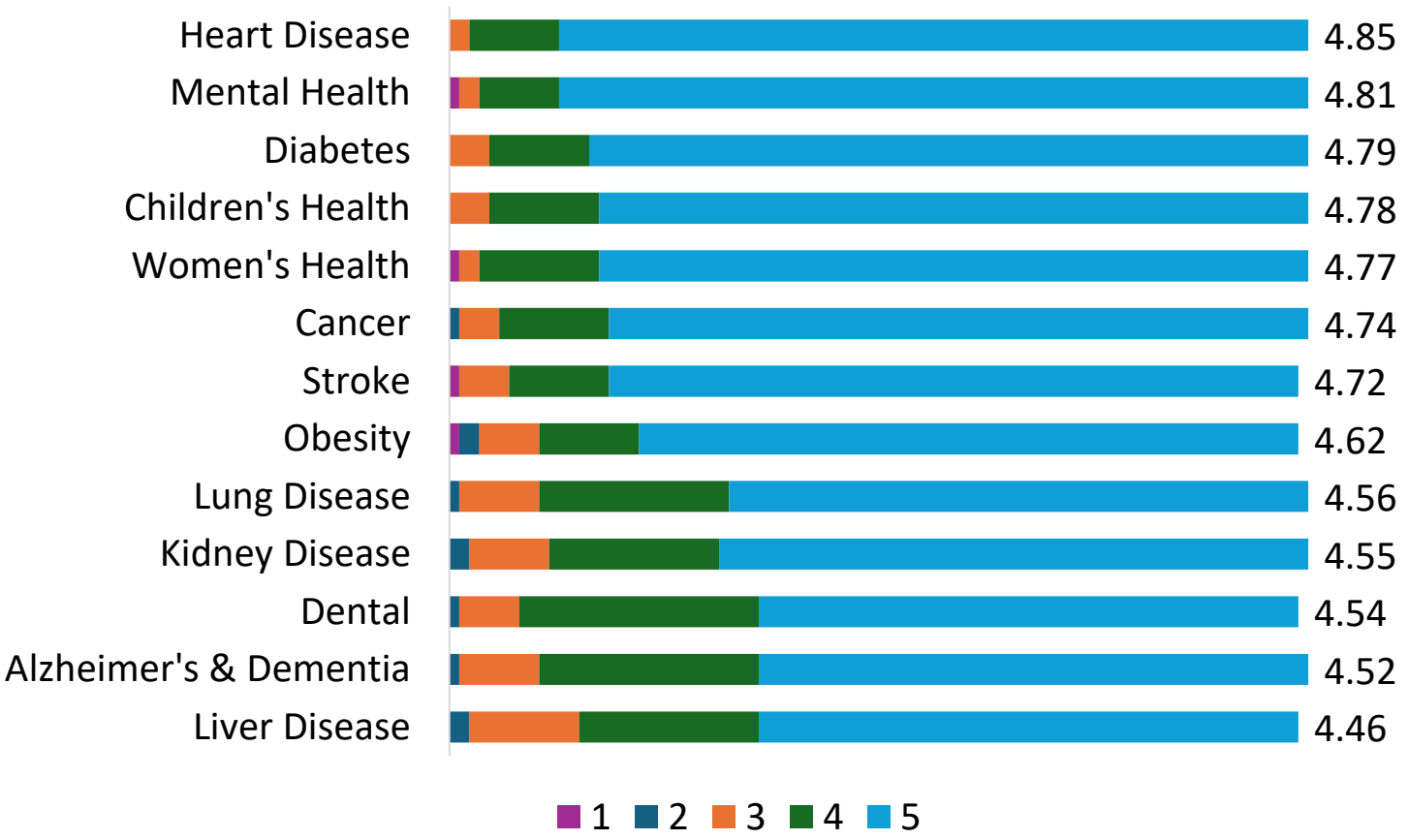
Community Survey Data

The health needs of the community include requisites for the improvement and maintenance of health status both in the community at large and in particular parts of the community, such as particular neighborhoods or populations experiencing health disparities. The community survey asked questions regarding health factors, lifestyle and personal factors, and community and healthcare services factors to better understand the local needs for the health status including groups with the highest health needs.

Health factors addressed areas such as chronic conditions, health conditions, and physical health. Lifestyle and personal factors addressed areas that affect the individual's health outcomes such as physical inactivity and substance abuse. Community and healthcare services factors addressed social determinants that influence community health, such as access to care, safety, and affordability.

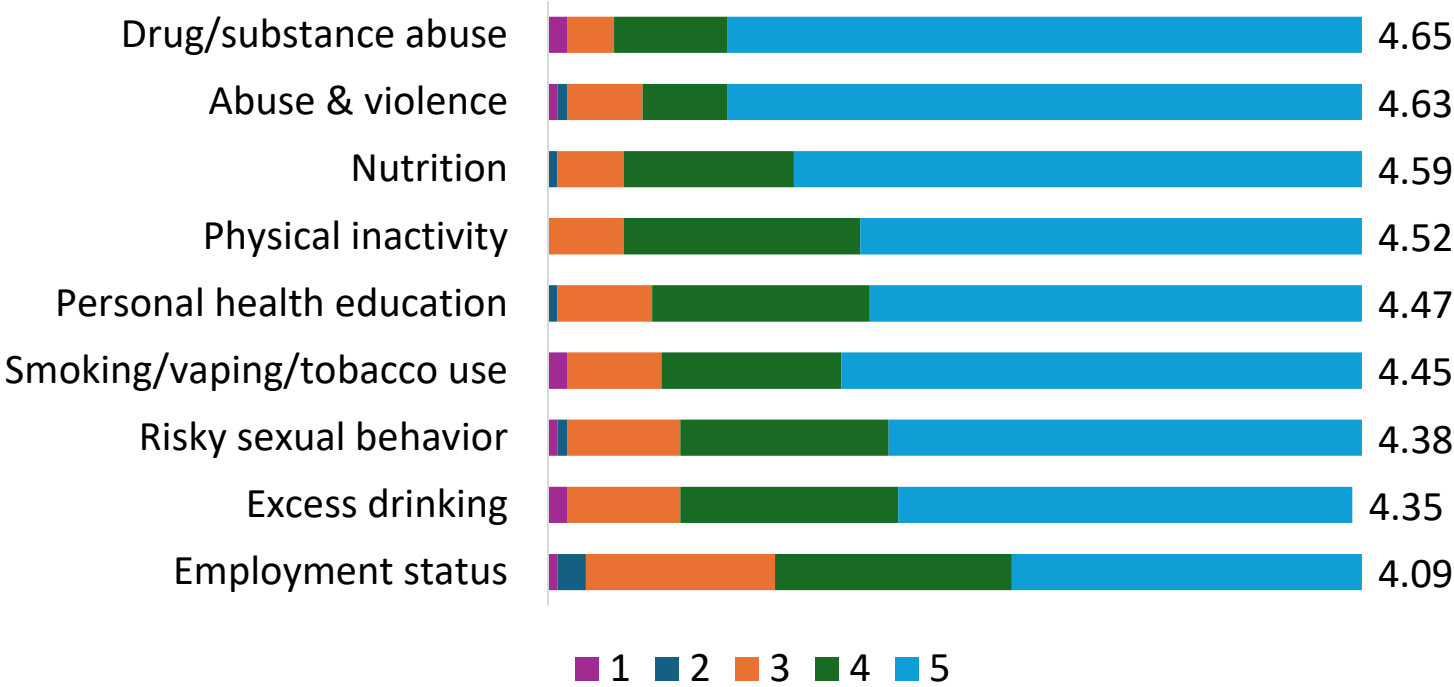
In our community survey, respondents had the opportunity to rate the importance of addressing different components of each factor. Results of the rankings are below.

Survey Question: Please rate the importance of addressing each Health Factor on a scale of 1 (not important) to 5 (very important).



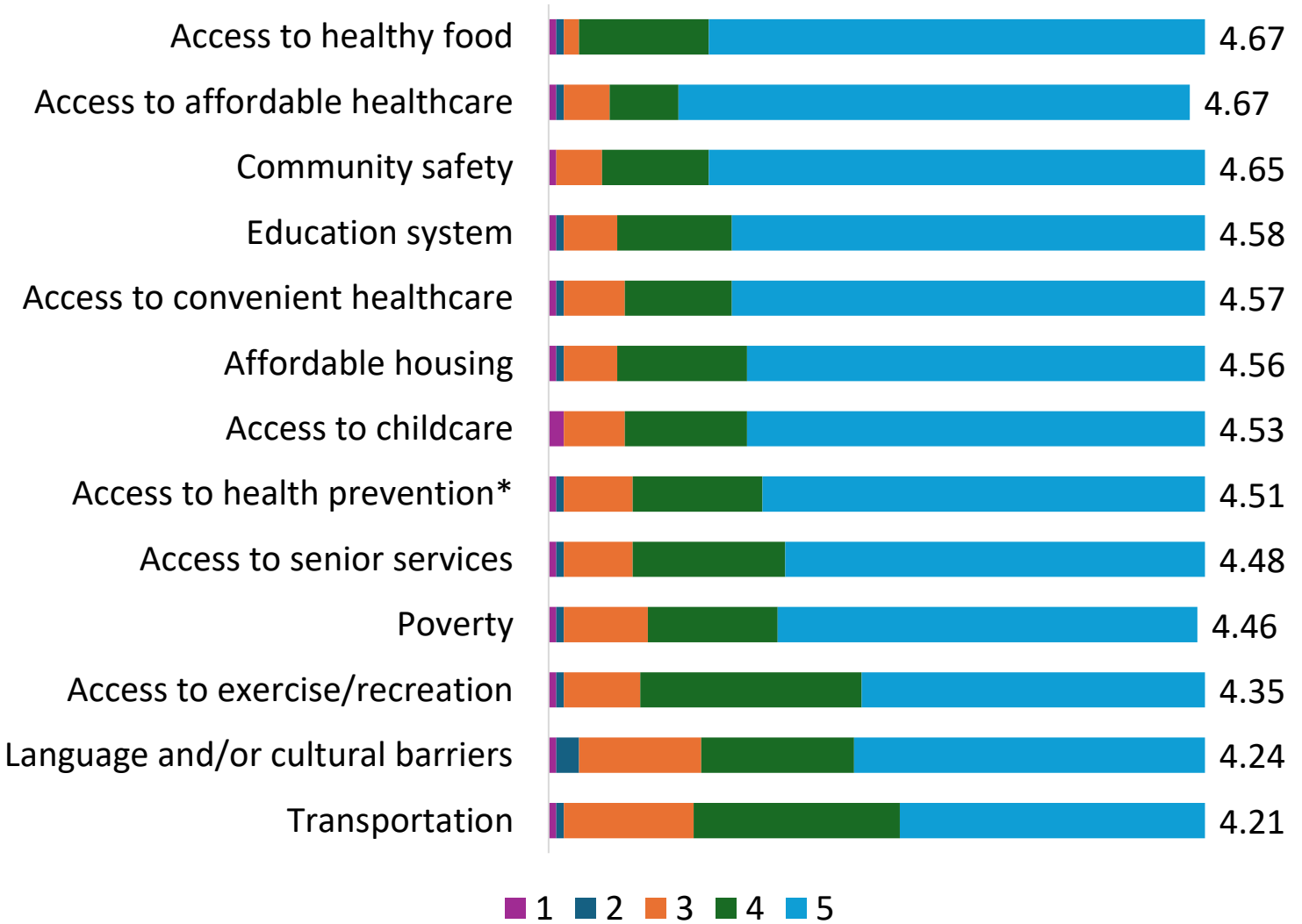
Community Survey Data

Survey Question: Please rate the importance of addressing each Lifestyle & Personal Factor on a scale of 1 (not important) to 5 (very important).



Community Survey Data

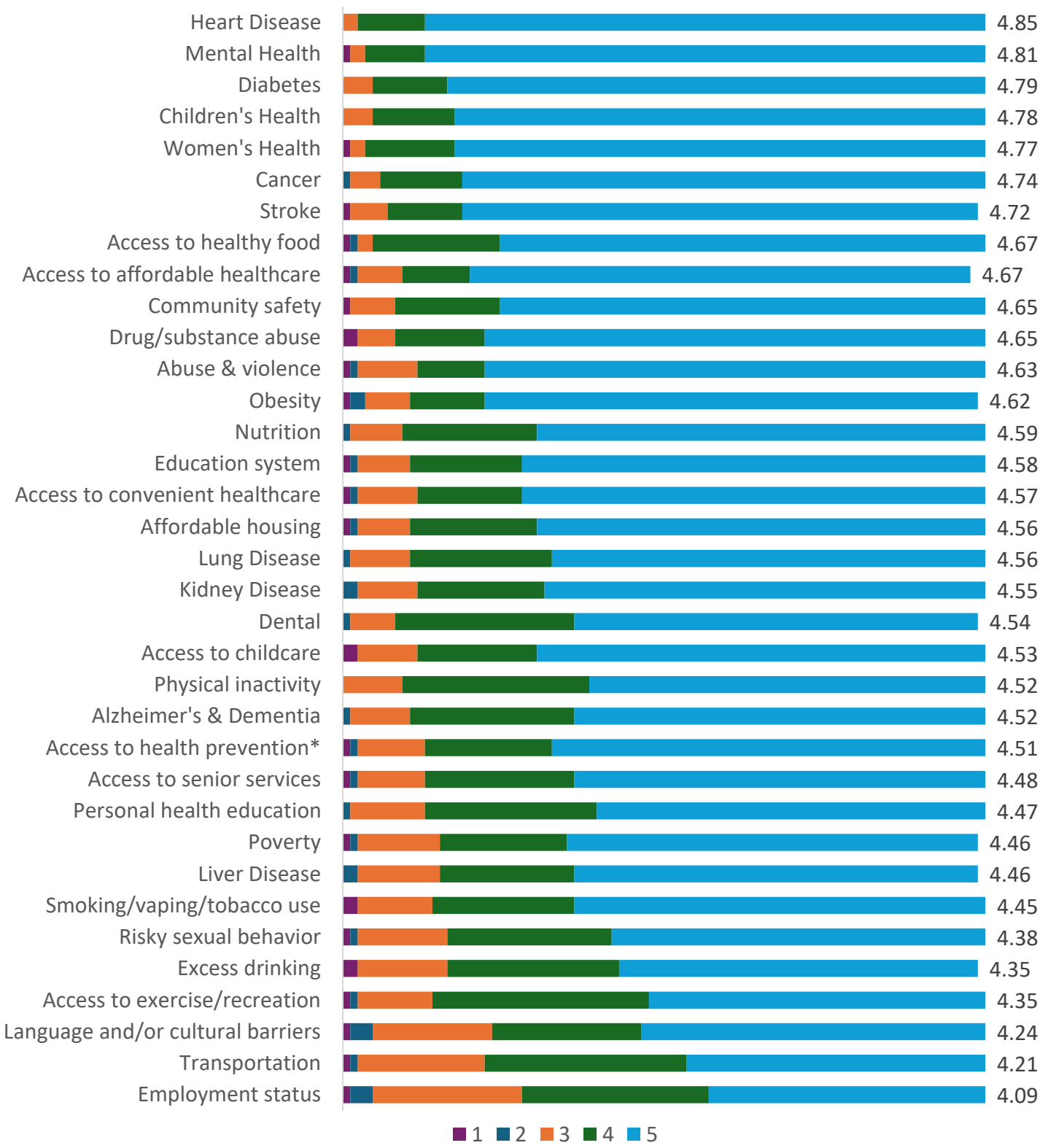
Survey Question: Please rate the importance of addressing each Community & Healthcare Services Factor on a scale of 1 (not important) to 5 (very important).



*Access to health prevention & education services

Community Survey Data

Overall Health Priority Ranking (includes all three factor categories)



*Access to health prevention & education services

Community Summit

Saline Memorial Hospital held a Community Summit on October 24, 2024. Below are topics of discussion and key takeaways.

Demographics* Slide examples

For the purpose of this CHNA, Saline Memorial Hospital defines its service area as Saline County, Arkansas.

Total Population
129,944

22.8% <18 years

18.7% 65+ years

51.0% Female

36.8% Rural

Median Household Income
\$71,188

Arkansas:
\$57,875

Survey Analysis** Slide examples

Respondent Place of Residence

Respondent Community Role

Role	% of Respondents
Community Resident	46.5%
Healthcare Professional	45.3%
Minority or Underserved Population	22.1%
Educator	17.4%
Government Employee or Representative	11.6%
Representative of Chronic Disease Group or Advocacy Organization	2.3%
Public Health Official	1.2%
Other	8.1%

Respondent Age Category

How would you describe your health?*

How would you describe the overall health of your community?*

Community Analysis: Saline County, Arkansas

HEALTHY PEOPLE 2030 U.S. GOALS

- Smoking: 6%
- Obesity: 36%
- Excessive Drinking: 25%
- Suicide Rate: 12.8
- High School Graduation: 91%

HEALTH BEHAVIORS

- Adult Smoking: 17% (AR: 22%)
- Adult Obesity: 35% (AR: 39%)
- Teen Births*: 18 (AR: 30)
- Food Insecurity: 11% (AR: 16%)
- Excessive Drinking: 15% (AR: 15%)

QUALITY OF LIFE

- Life Expectancy: 75.9 (AR: 74.3)
- Poor or Fair Health: 17% (AR: 20%)
- Diabetes Prevalence: 9% (AR: 11%)
- Suicide Rate*: 23 (AR: 19)
- Poor Physical Health Days: 3.9
- Poor Mental Health Days: 5.6

Services Utilized for Basic Health Needs	% of Total Votes
My primary care doctor or family physician	44.9%
Urgent care center	21.4%
Hospital (including ER)	14.4%
Retail clinic (CVS, Walgreens, etc.)	10.7%
Alternative healthcare providers (chiropractors, etc.)	5.3%
Health department	2.1%
Free clinic	0.5%
Other	0.5%

Most Important Factors When Considering a Healthcare Provider (% of total votes)

Prioritizing Health Needs Results of participant voting

Health Need	% of Votes
Mental Health	86%
Substance Use Disorder	43%
Heart Disease	38%
Women's Health	33%
Access to Affordable Healthcare	33%
Access to Healthy Food	29%

Addressing Health Needs Participant created goals

- Mental Health:** Improve use of mental health resources by ___% by next CHNA and address the suicide rate by improvement in training and intervention
- Substance Use Disorder:** Resource communication (inpatient, recovery, outpatient, etc.) and school implementation for awareness
- Heart Disease:** Reduce number of heart disease related deaths and heart disease in the community
- Women's Health:** Improve maternal mortality and make sure community knows of resources

Evaluation & Selection Process

Severity or urgency of health need	Feasibility and effectiveness	Impact on health disparities	Importance identified by community
Health need has a higher severity, urgency, or burden and if addressed, could be positively impacted	Pressing health needs where hospital interventions are feasible and impactful	Priority population health needs that have the ability to be positively impacted if addressed	Health needs with online survey higher rankings or frequently mentioned by community members

Saline Memorial Hospital Health Need Evaluation

	Severity or urgency	Feasibility and effectiveness	Impact on health disparities	Importance identified by community
Mental Health	✓	✓	✓	✓
Substance Use Disorder	✓	✓	✓	✓
Heart Disease	✓	✓	✓	✓
Women’s Health	✓	✓	✓	✓
Access to Affordable Healthcare			✓	
Access to Healthy Food			✓	
Diabetes		✓		✓
Children’s Health		✓	✓	✓
Cancer		✓		
Stroke		✓		
Obesity – Healthy Weight		✓		

Overview of Priorities

Mental Health

Mental health was the second highest ranked health need in the community with a ranking of 4.81. Mental health was also an identified health need in the 2021 CHNA.

The following data points provide insight regarding mental health in Saline County.

- Access to mental health provider is 650 people per mental health provider compared to Arkansas at 380 people per mental health provider
- Suicide rate is 23 deaths by suicide per 100,000 people compared to Arkansas at 19 deaths per 100,000 people.
- Poor mental health days is 5.6 days of the previous 30 days compared to Arkansas at 5.8 days.

Women's Health

Women's health had a high ranking of 4.77 in the community survey and was also a heavily focused topic at the community summit.

The following data points provide insight regarding women's health in Arkansas.

- Maternal mortality rate in Arkansas between 2018-2022 was 38.3 deaths per 100,000.

Heart Disease

Heart disease was the highest ranked health need in the community with a ranking of 4.85. Heart disease was also an identified health need in the 2021 CHNA.

The following data points provide insight regarding heart disease in Arkansas.

- The 2022 mortality rate for heart disease in Arkansas was 224.1 deaths per 100,000 people, which was the 4th highest rate in the United States.

Overview of Priorities

Not Selected Health Priorities

Saline Memorial Hospital understands the need to address all health needs and is committed to making impacts across the community where possible. For the purpose of this CHNA, and out of respect for the scarce resources across the organization, Saline Memorial Hospital has decided to focus efforts toward the previous three health priorities.

The health priorities not selected are:

- Substance Use Disorder:** Saline Memorial Hospital will work to address aspects of Substance Use Disorder through our planned efforts for Mental Health. In addition, we will partner with other organizations who are better equipped to address the day-to-day needs for substance abuse.
- Access to Affordable Healthcare:** The community currently has other organizations actively working to address this need.
- Access to Healthy Food:** Saline Memorial Health is a supporting sponsor of Arkansas Food Bank, who is better-equipped to address this need. We will continue to partner with this organization with the goal of improving access to health foods for Saline County.
- Although not a priority of our implementation plan, Saline Memorial is involved with or supports efforts in the following areas:
 - Children’s Health:** Saline Memorial collaborates with Arkansas Children’s Hospital Nursery Alliance and is pursuing EMSC ED Pediatric Readiness Recognition program – Gold Bear Status.
 - Diabetes:** Saline Memorial provides inpatient dialysis services as well as provides blood glucose testing and diabetic educational resources at health fairs offered to local schools.
 - Cancer:** Saline Memorial partners with American Cancer Society and Genesis Cancer & Blood Institute to provide community education and awareness on topics related to cancer prevention and early detection.
 - Stroke:** Saline Memorial participates in the UAMS IDHI (formerly AR Saves) stroke program and is preparing to become an “Arkansas Stroke Ready” hospital.
 - Obesity – Healthy Weight:** Saline Memorial maintains an accredited weight-loss surgery center and non-surgical medical weight-loss programs.

Implementation Plan Framework

Executive and clinical leadership at Saline Memorial Hospital gathered to discuss plans to address the identified health priorities. The leaders decided to breakout the health priorities into sub-categories to effectively create action plans to make positive community impacts. The next six pages outline the implementation plan for each identified health need seen below.

This implementation plan was approved by the JV Board on 11.12.24 and the Advisory Board on 12.03.24

Implementation Plan: Mental Health

Initiative: Increasing number of beds available for adult behavioral health unit

Goal: Ten additional adult behavioral health beds by 12/31/26.

Strategies Actions facility plans to implement	Goal Completion Date	Accountable Organization/Team	Community Resources & Partnerships
Strategy 1: Build capital budget and equipment plan for relocated Generations unit on 4 th floor and expanded adult behavioral health beds on 6 th floor.	12/31/26	➤ Saline Executive and Behavioral Health Leadership Team	➤ No community partnership
Strategy 2: Renovation on 4 th floor to accommodate on Generations unit.	6/30/27	➤ Saline Executive and Behavioral Health Leadership Team	➤ No community partnership
Strategy 3: Equipment acquisition to furnish new Generations unit on 4 th floor.	9/30/27	➤ Saline Executive and Behavioral Health Leadership Team	➤ No community partnership
Strategy 4: Backfill of old Generations unit for new, additional behavioral health beds.	12/31/27	➤ Saline Executive and Behavioral Health Leadership Team	➤ No community partnership
Strategy 5: Provide community outreach highlighting anticipated benefit of unit expansion and connection to community health needs assessment.	1/1/28	➤ Saline Executive and Behavioral Health Leadership Team ➤ HSC and Facility Marketing Team	➤ No community partnership

Anticipated Impact:

- Improved access to acute behavioral health needs for the community.

Implementation Plan: Mental Health

Initiative: Conduct Mental Health Symposium

Goal: Increase awareness around resources available for mental health and reduce the stigma about seeking help.

Strategies Actions facility plans to implement	Goal Completion Date	Accountable Organization/Team	Community Resources & Partnerships
Strategy 1: Budget, speakers, guest list, and topics planning.	12/31/24	➤ Saline Behavioral Health and Marketing Teams with support from the Executive Team	➤ No community partnership
Strategy 2: Prepare for and host Mental Health Symposium.	5/31/25	➤ Saline Behavioral Health and Marketing Teams with support from the Executive Team	➤ Counseling Clinic ➤ New Hope
Strategy 3: Market and make public aware of efforts to address mental health.	12/31/25	➤ Saline Behavioral Health and Marketing Teams with support from the Executive Team	➤ No community partnership

Anticipated Impact:

- 60 total attendees for the Mental Health Symposium.
- Increased awareness of mental health resources.
- Decreased stigma regarding seeking mental health help.

Implementation Plan: Mental Health

Initiative: Suicide awareness and prevention

Goal: Increase awareness around resources available for suicide prevention and reduce the stigma about seeking help.

Strategies Actions facility plans to implement	Goal Completion Date	Accountable Organization/Team	Community Resources & Partnerships
Strategy 1: Explore opportunity to create community-wide coalition to address suicide prevention and awareness.	12/31/25	➤ Saline Executive and Marketing Team	➤ No community partnership
Strategy 2: Through eventual coalition, offer training, de-escalation tactics, and resources.	Annual by 12/31/25 – 12/31/27	➤ Saline Behavioral Health and Executive Team	➤ Law Enforcement ➤ Local mental health providers
Strategy 3: Conduct Suicide Awareness Luminary Ceremony annually.	Annually by 9/30/25 – 9/30/27	➤ Saline Behavioral Health, Marketing, and Executive Team	➤ No community partnership
Strategy 4: Community education and outreach.	Ongoing	➤ Saline Behavioral Health, Marketing, and Executive Team	➤ No community partnership

Anticipated Impact:

- Increased awareness around suicide prevention resources.
- Have a positive impact on county wide efforts to reduce suicide rates

Implementation Plan: Women’s Health

Initiative: Perinatal Care

Goal: Reduce the number of patients delivered with late or no prenatal care. Contribute to statewide efforts to reduce maternal mortality rate.

Strategies <small>Actions facility plans to implement</small>	Goal Completion Date	Accountable Organization/Team	Community Resources & Partnerships
Strategy 1: Communications and marketing plan to increase awareness and education around resources and access to care.	Ongoing	<ul style="list-style-type: none"> ➤ Saline Women’s Clinic, Saline Memorial Hospital’s Women’s and Infant’s Services, and Marketing Team 	<ul style="list-style-type: none"> ➤ New Beginnings Pregnancy Center
Strategy 2: Community education and outreach regarding prenatal and post-natal care.	Ongoing	<ul style="list-style-type: none"> ➤ Saline Women’s Clinic, Saline Memorial Hospital’s Women’s and Infant’s Services, and Marketing Team 	<ul style="list-style-type: none"> ➤ City of Benton ➤ City of Bryant

Anticipated Impact:

- Contribute to statewide efforts to reduce maternal mortality rate.
- Reduce frequency of women presenting for delivery with late or no prenatal care.

Implementation Plan: Women’s Health

Initiative: Breast Cancer Awareness & Well Women Checks

Goal: Increase awareness and access to women’s preventive care and screening.

Strategies Actions facility plans to implement	Goal Completion Date	Accountable Organization/Team	Community Resources & Partnerships
Strategy 1: Promote breast cancer awareness and the need early detection through Bosom Buddies Bash event.	Annual by 10/31/25-10/31/27	➤ Saline Diagnostic Imaging and Marketing Team	➤ American Cancer Society-Arkansas Chapter
Strategy 2: Share cervical cancer awareness and education via social media and other marketing outlets.	Annual by 1/31/25-1/31/27	➤ Saline Women’s Clinic and Marketing Team	➤ No community partnership
Strategy 3: End of year well women checks campaign.	Annual by 12/31/25-12/31/27	➤ HSC and Facility Marketing Team and Saline Women’s Clinic	➤ No community partnership

Anticipated Impact:

- Increased number of mammogram appointments created annually.
- Increased number of well women visits completed annually at Saline Women’s Clinic.

Implementation Plan: Heart Disease

Initiative: Maintain accredited chest pain designation

Goal: Share education and resources about living a heart healthy lifestyle and how to respond during a heart attack or emergency. Maintain access to emergency care for heart attacks.

Strategies Actions facility plans to implement	Goal Completion Date	Accountable Organization/Team	Community Resources & Partnerships
Strategy 1: Community outreach regarding CPR and AED training.	Ongoing	➤ Saline Chest Pain Coordinator and Team	➤ No community partnership
Strategy 2: Health fair screenings during back to school for teachers and staff.	Annual by 8/31/25-8/31/27	➤ Saline Chest Pain Coordinator and Marketing Team	➤ Benton and Bryant School Districts
Strategy 3: Host Beat Goes on 5k.	Annual by 3/31/25-3/31/27	➤ Saline Chest Pain Coordinator and Marketing Team	➤ No community partnership
Strategy 4: Maintain 24/7 interventional cardiology access at Saline Memorial Hospital.	Ongoing	➤ Saline Executive Team	➤ No community partnership

Anticipated Impact:

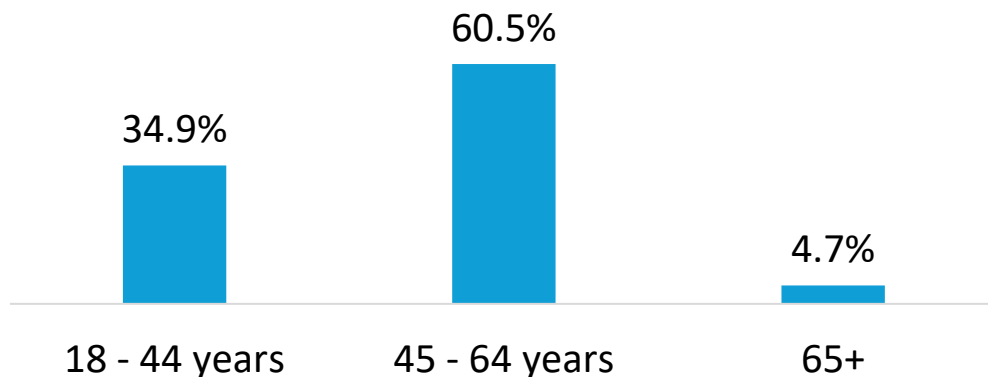
- Increase total number of community members reached with heart healthy lifestyle education and resources
- Reduced time to access emergency care for heart attack patients by maintaining only interventional cardiology program in Saline County.

Appendix: Survey Results

Survey Results

Survey Question 1: Please provide your age.

Respondent Age Category



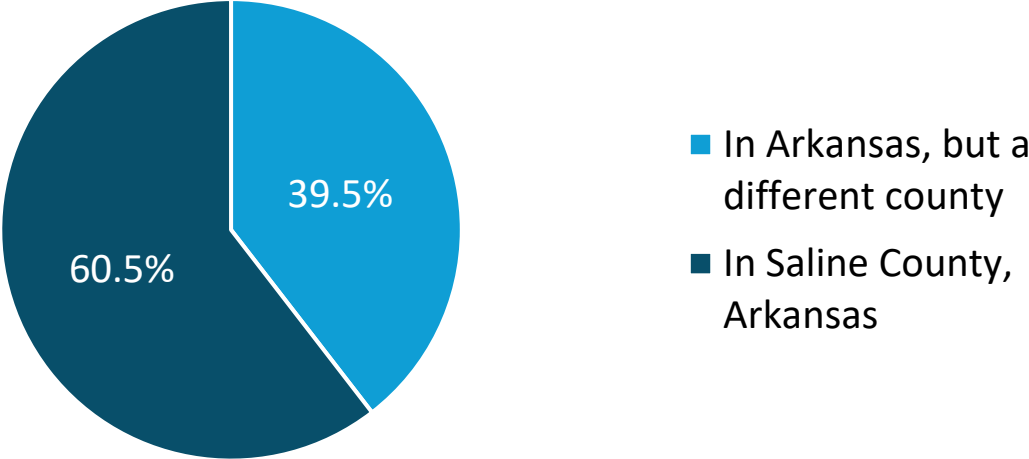
Survey Question 2: Please select which roles apply to you. [Check all that apply]

Respondent Community Role	% of Respondents
Community Resident	46.5%
Healthcare Professional	45.3%
Minority or Underserved Population	22.1%
Educator	17.4%
Government Employee or Representative	11.6%
Representative of Chronic Disease Group or Advocacy Organization	2.3%
Public Health Official	1.2%
Other	8.1%

Survey Results

Survey Question 3: Where is your primary residence?

Respondent Place of Residence



Survey Question 4: How would you describe your health? (1 star = Poor; 5 stars = Excellent)



Survey Question 5: How would you describe the overall health of your community? (1 star = Poor; 5 stars = Excellent)



Survey Results

Survey Question 6: Please rate the importance of addressing each Health Factor on a scale of 1 (not important) to 5 (very important).

Weighted average of votes

Heart Disease	4.85
Mental Health	4.81
Diabetes	4.79
Children's Health	4.78
Women's Health	4.77
Cancer	4.74
Stroke	4.72
Obesity	4.62
Lung Disease	4.56
Kidney Disease	4.55
Dental	4.54
Alzheimer's & Dementia	4.52
Liver Disease	4.46

Factor is in the overall top 10

Survey Question 7: If there is another Health Factor that needs addressing, please specify

- Addiction/Substance Use Disorder (3)
- Hypertension (2)
- Sexual Health (2)
- Autoimmune Diseases in the African American Community
- Chronic Pain
- General Personal Cleanliness
- Grief Support
- Prostate Screenings
- LGBTQ
- Lupus
- Post-traumatic Stress
- Postpartum Care & Lactation Coaching

Survey Results

Survey Question 8: Please rate the importance of addressing each Lifestyle & Personal Factor on a scale of 1 (not important) to 5 (very important).

Weighted average of votes

Drug/substance abuse	4.65
Abuse & violence	4.63
Nutrition	4.59
Physical inactivity	4.52
Personal health education	4.47
Smoking/vaping/tobacco use	4.45
Risky sexual behavior	4.38
Excess drinking	4.35
Employment status	4.09

Factor is in the overall top 10

Survey Question 9: If there is another Lifestyle & Personal Factor that needs addressing, please specify

- Functional education
- Functional rehabilitation
- Post traumatic stress

Survey Results

Survey Question 10: Please rate the importance of addressing each Community & Healthcare Services Factor on a scale of 1 (not important) to 5 (very important).

Weighted average of votes

Access to healthy food	4.67
Access to affordable healthcare	4.67
Community safety	4.65
Education system	4.58
Access to convenient healthcare	4.57
Affordable housing	4.56
Access to childcare	4.53
Access to health prevention & education services	4.51
Access to senior services	4.48
Poverty	4.46
Access to exercise/recreation	4.35
Language and/or cultural barriers	4.24
Transportation	4.21

Factor is in the overall top 10

Survey Question 11: If there is another Community & Healthcare Services Factor that needs addressing, please specify

- Assistance understanding medical bills
- Raising family in positive environment

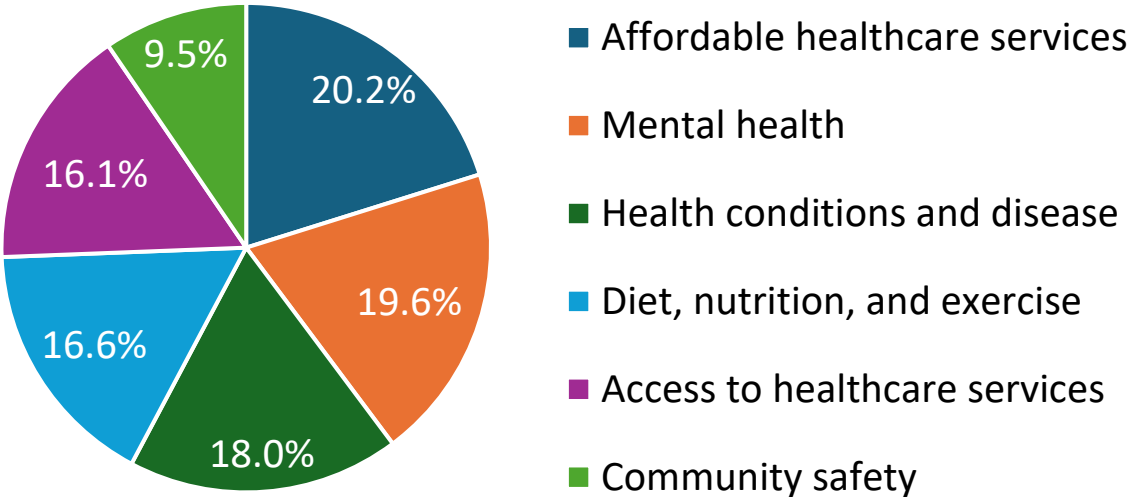
Survey Results

Survey Question 12: Which groups have the highest health needs in your community? (Select all that apply)

Groups with Highest Health Needs	% of Total Votes
Low-income groups	24.8%
Older adults	20.5%
Racial and ethnic minority groups	14.0%
Children	13.0%
Individuals requiring additional health support	11.7%
Women	11.1%
LGBTQ+	4.9%

Survey Question 13: What are the health needs, if any, for the group(s) selected above? (Select all that apply)

Health Needs for Groups Identified



Survey Results

Survey Question 14: How would you rate the quality of healthcare services in your community? (1 star = Poor; 5 stars = Excellent)



Survey Question 15: How would you rate the convenience of healthcare services in your community? (1 star = Poor; 5 stars = Excellent)

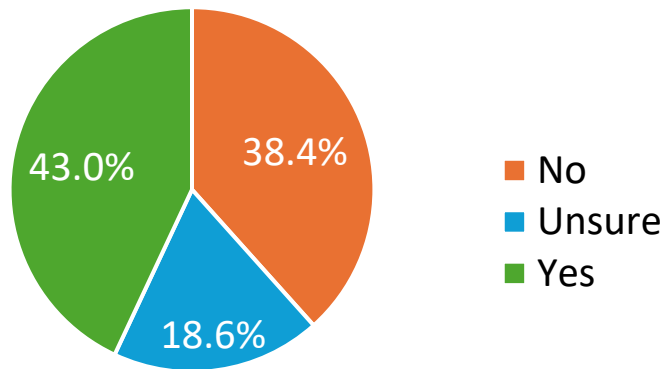


Survey Question 16: How would you rate the affordability of healthcare services in your community? (1 star = Poor; 5 stars = Excellent)



Survey Results

Survey Question 17: Are you aware of efforts to address Substance Abuse Disorder in your community in the last 3 years?



Survey Question 18: If yes, please share comments or observations about the actions Saline Memorial Hospital has taken to address Substance Use Disorder.

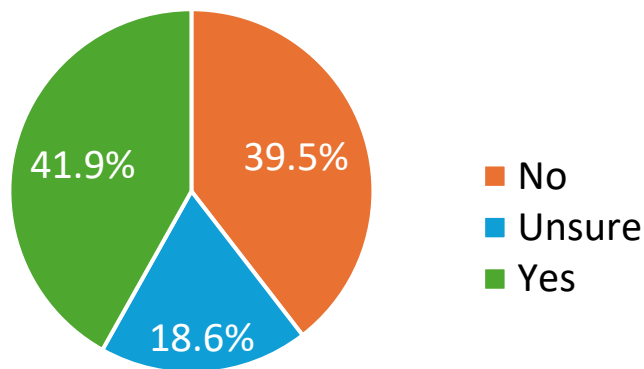
Themes from Comments (29 responses):

1. NARCAN kit availability/training (13)
2. Beat Goes On 5k (7)
3. Detox unit (2)
4. Recovery specialist (2)
5. StepOne service (2)

- Saline Memorial Hospital has made a point to cover the topic and share different resources for identifying and treating substance abuse by sending emails and having meetings and with discussion and power points to share the message.
- Sending representatives to schools and churches and community events.
- Detox unit is not well advertised.
- Need more public assistance. Going into the homeless camps, maybe to Stride House to discuss with those groups. Go to where the population is, rather than the population coming to Saline Health System.
- Need people in the streets helping the homeless and mentally challenged for food insecurity and lack of access to medication or medical care.

Survey Results

Survey Question 19: Are you aware of efforts to address Mental Health in your community in the last 3 years?



Survey Question 20: If yes, please share comments or observations about the actions Saline Memorial Hospital has taken to address Mental Health.

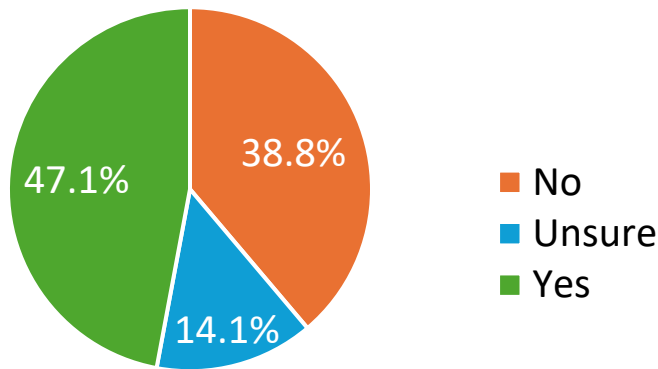
Themes from Comments (20 responses):

1. Luminary Ceremony (3)
2. Mental Health Symposium (3)
3. Support groups/workshops (3)
4. Increased awareness (3)
5. Go to those needing mental health (2)
6. Wellness Wednesdays for staff (1)

- Suicide awareness was promoted on social media.
- Workshop put on by Alpha Alpha Rho Omega dealing with mental health.
- Through Alpha Kappa Alpha programming.
- I have seen flyers and emails pertaining to information about how people, patients, and employees can seek help for mental health and Saline Memorial has required and provided additional training and information for helping those with mental health.
- We need affordable options.

Survey Results

Survey Question 21: Are you aware of efforts to address Obesity – Healthy Weight in your community in the last 3 years?



Survey Question 22: If yes, please share comments or observations about the actions Saline Memorial Hospital has taken to address Obesity – Healthy Weight.

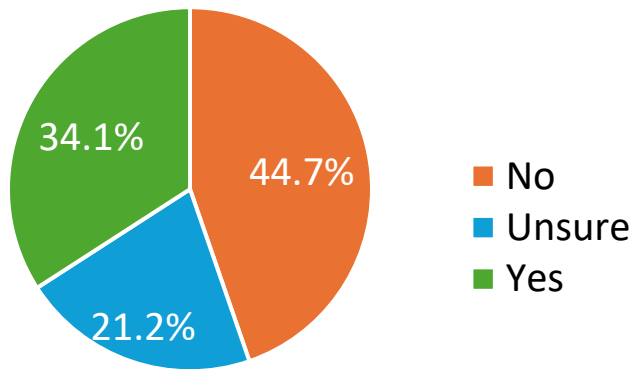
Themes from Comments (25 responses):

1. Support groups/weight loss programs (7)
2. Vitality Program (5)
 - Was useful, but has been cancelled
 - Current program is slow to start and not well advertised
3. Saline's weight loss center (3)

- Communication on social media and emails and flyers.
- Through the local chapter of Alpha Kappa Alpha Sorority Inc and community partnerships.
- Saline is performing gastric surgeries.
- We have a bariatric team that is well known.
- The support group I think is only for those actively using the Weight Loss Center and preparing for surgery. What about patients who don't want surgery? Expansion into nutrition for more reach.
- Consider having seminars in the workplace of Saline County employers. Many are unaware of services available at the hospital.
- Need better billing practices and understanding from the hospital standpoint.

Survey Results

Survey Question 23: Are you aware of efforts to address Chronic Diseases in your community in the last 3 years?



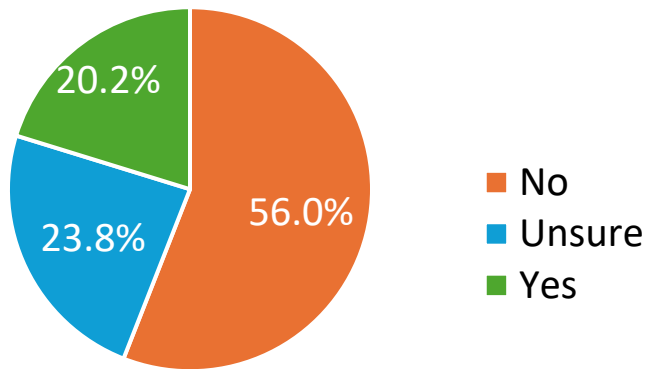
Survey Question 24: If yes, please share comments or observations about the actions Saline Memorial Hospital has taken to address Chronic Diseases.

Themes from Comments (15 responses):

1. Health fair (3)
 2. Community education (4)
 - Stroke program is always at Benton's Third Thursdays giving out information.
 - The hospital and specialty clinics work hard in the community to offer guidance and resources to patients and family members.
- Bosom Buddies for breast cancer.
 - Support groups are a plus.
 - Need to take initiatives into the community. Maybe to employee groups.
 - Offering or referring for consumer shots at low or no cost.
 - Prevention, response, and treatment.
 - Heart disease.

Survey Results

Survey Question 25: Are you aware of efforts to address Health Literacy in your community in the last 3 years?



Survey Question 26: If yes, please share comments or observations about the actions Saline Memorial Hospital has taken to address Health Literacy.

Themes from Comments (10 responses):

1. Free physicals (2)
2. Health fair (2)
3. Hispanic community education/support (2)
 - More education and bilingual materials needed
 - Need onsite bilingual speakers; 1-800# is not personal- need human approach
4. Increased educational support (1)

- Partnering with community groups.
- Posting literature in conspicuous places for easy public access.

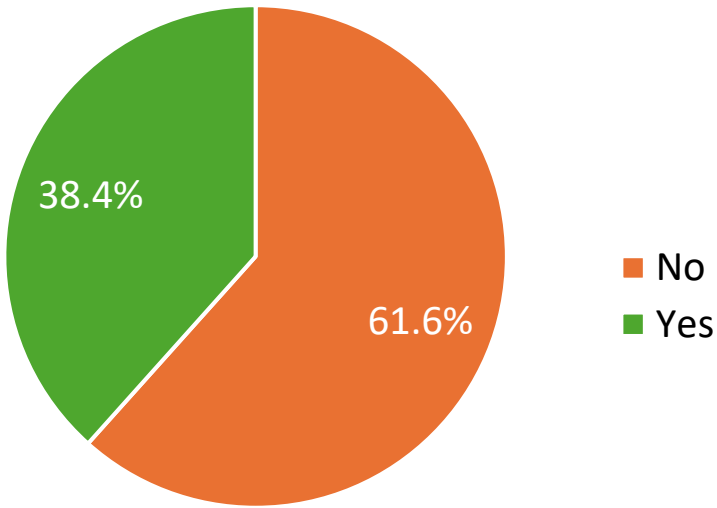
Survey Results

Survey Question 27: Which services do you use for basic health needs? (Select all that apply)

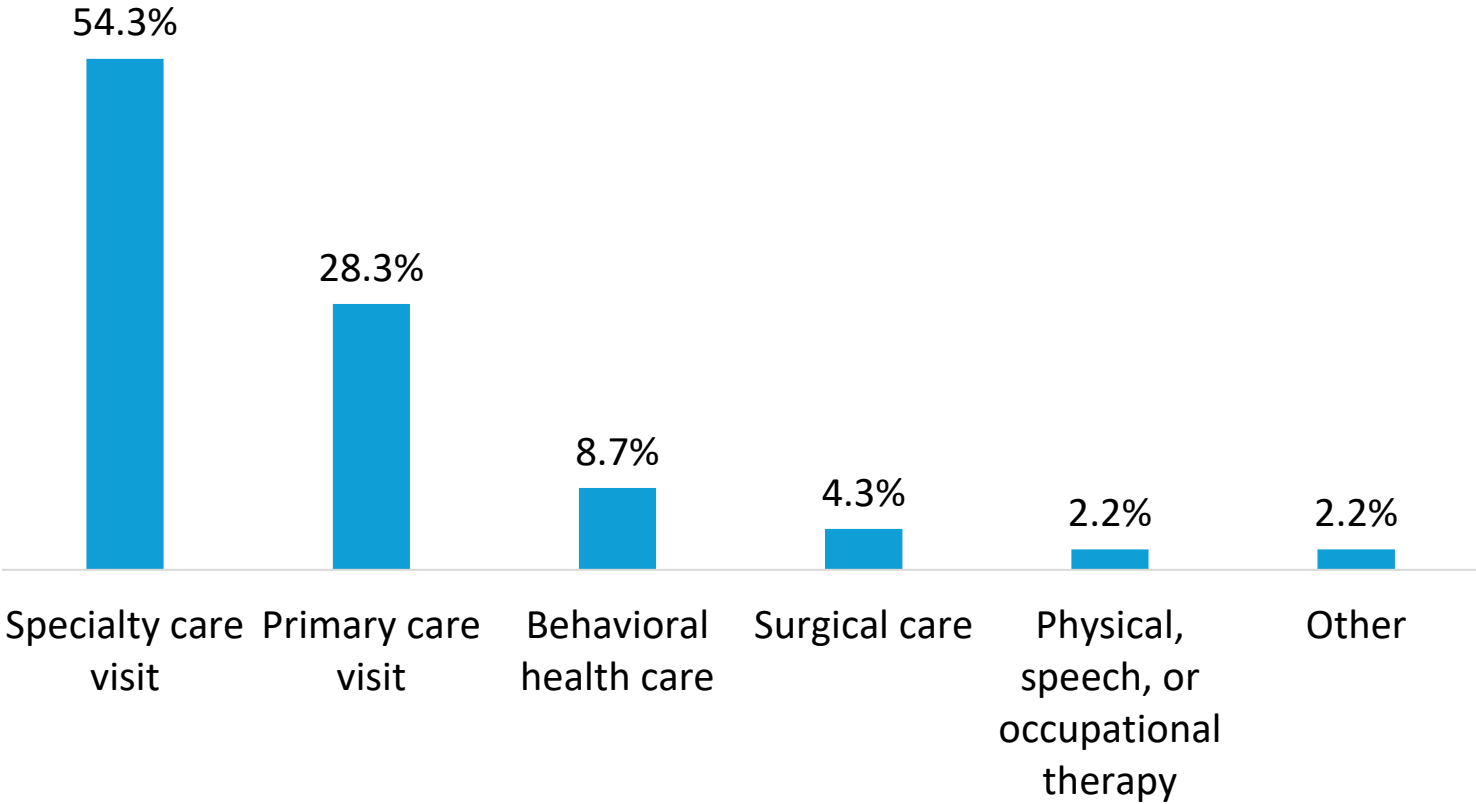
Services Utilized for Basic Health Needs	% of Total Votes
My primary care doctor or family physician	44.9%
Urgent care center	21.4%
Hospital (including ER)	14.4%
Retail clinic (CVS, Walgreens, etc.)	10.7%
Alternative healthcare providers (chiropractors, etc.)	5.3%
Health department	2.1%
Free clinic	0.5%
Other	0.5%

Survey Results

Survey Question 28: In the last 12 months, have you received healthcare outside of your community?

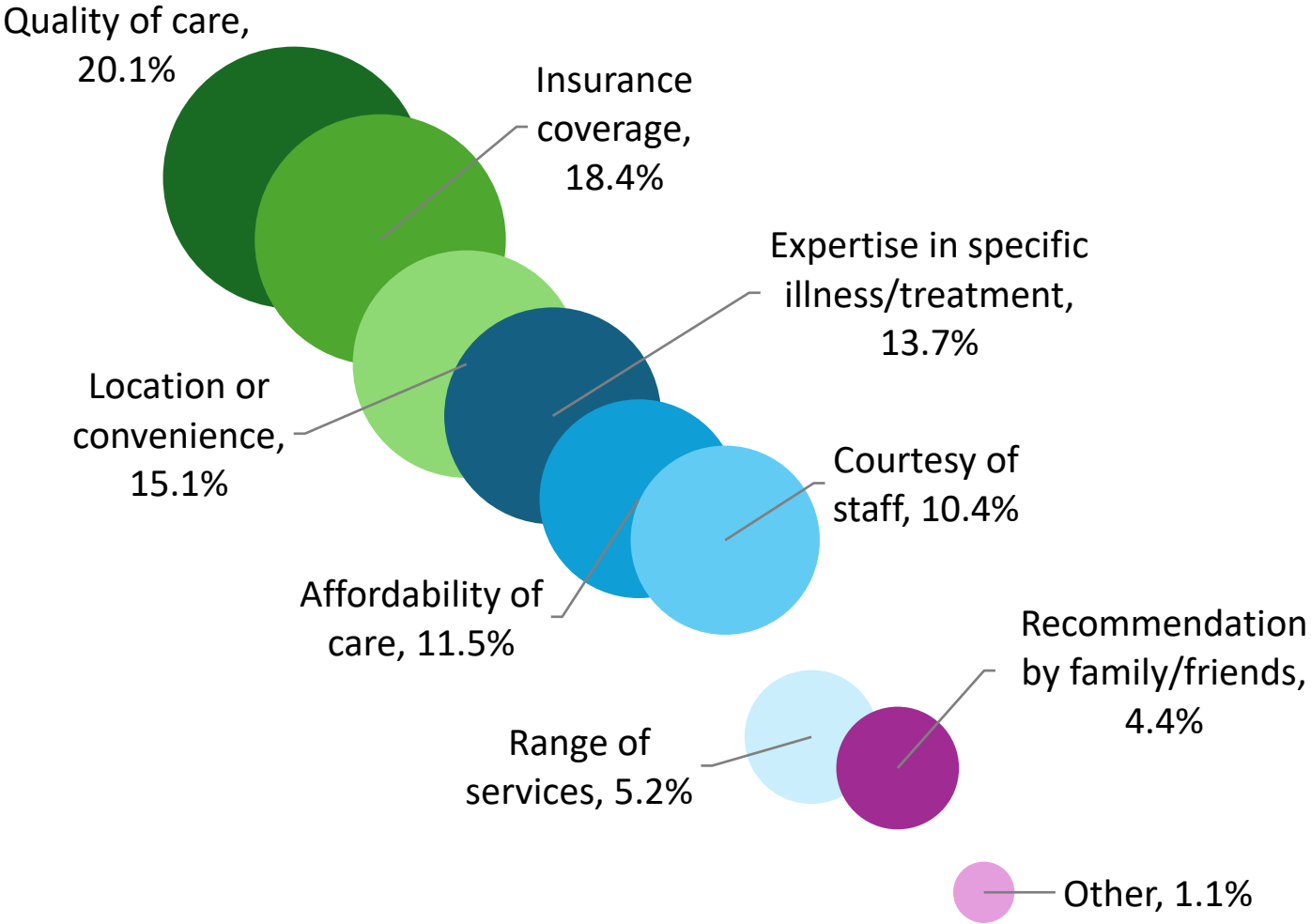


Survey Question 29: Which of the following services did you receive outside the community? (Select all that apply)



Survey Results

Survey Question 30: What do you consider to be the most important when considering a healthcare provider? (Select all that apply)



Survey Results

Survey Question 31: Which of the following public health services should Saline Memorial Hospital and its community partners focus on improving? (Select all that apply)

